



Village of Westfield Tree Planting Program – 2026

Property Owner: _____

Property Address: _____

Delivery Address (If Different): _____

Type of Tree Requested:

- Red Maple Sugar Maple Balsam Fir Alleghany Serviceberry Downy Serviceberry River Birch
- Shadblow Serviceberry Shagbark Hickory Hackberry Eastern Redbud Flowering Dogwood
- Washington Hawthorn Eastern Red Cedar Black Gum Hop Hornbeam White Spruce White Oak
- Swamp White Oak Scarlet Oak Bur Oak Northern Red Oak Basswood American Elm

The Property Owner agrees to the following:

- The Village of Westfield cannot guarantee delivery of any of the above trees. Substitutes will be furnished, when possible, but no replacements will be issued.
- The trees will be delivered to the applicant’s residence by the Village of Westfield Public Works Divisi
- All trees must be planted off the State, County, Town and Village right-of-ways.
- No trees are to be planted under electric utility lines.
- Special care should be taken to avoid planting trees near sewer laterals and sidewalks. A minimum of ten (10) feet is recommended.
- The Village will locate utilities and hazards to avoid poor locations for planting.
- If trees are not planted in a timely manner, they will be removed from premises.

Signature (Property Owner)

Date

Contact Number

****Application Deadline – June 30th – There is a limited number of applications that can be accepted, so they will be processed on a first come, first served basis.****

NOTE: These trees are not for resale and are provided to the customer to be planted on their property, not to be given away. Due to continual misuse of the Tree Planting Program, regulations have been developed regarding the removal of unplanted or improperly planted trees. Customers that are found in violation of the guidelines as outlined above will not be allowed to participate in this program in the future.

Balsam Fir

Abies balsamea



Height: 60 ft
Width: 20 ft

USDA Hardiness
Zones: 3 – 5

Carbon
Sequestration Rate

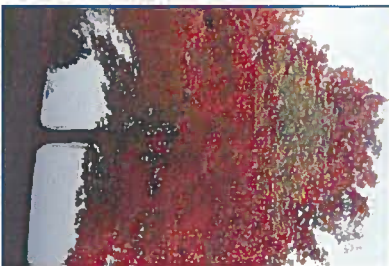


Wildlife Value
Planting
considerations



Red Maple

Acer rubrum



Height: 55 ft
Width: 40 ft

USDA Hardiness
Zones: 3 – 9

Carbon
Sequestration Rate

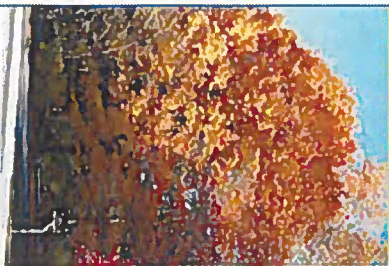


Wildlife Value
Planting
considerations



Sugar Maple

Acer saccharum



Height: 60 ft
Width: 45 ft

USDA Hardiness
Zones: 3 – 8

Carbon
Sequestration Rate



Wildlife Value
Planting
considerations



Downy Serviceberry

Amelanchier arborea



Height: 20 ft
Width: 20 ft

USDA Hardiness
Zones: 4 – 9

Carbon
Sequestration Rate

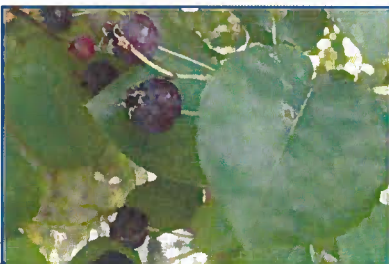


Wildlife Value
Planting
considerations



Shadblow Serviceberry

Amelanchier canadensis



Height: 25 ft
Width: 20 ft

USDA Hardiness
Zones: 4 – 8

Carbon
Sequestration Rate

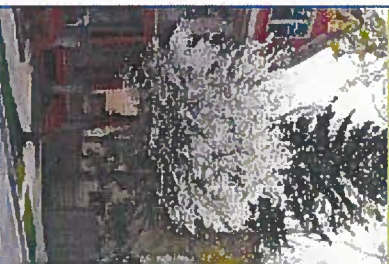


Wildlife Value
Planting
considerations



Allegheny Serviceberry

Amelanchier laevis



Height: 25 ft
Width: 25 ft

USDA Hardiness
Zones: 4 – 8

Carbon
Sequestration Rate



Wildlife Value
Planting
considerations



River Birch

Betula nigra



Height: 55 ft
Width: 50 ft

USDA Hardiness
Zones: 3 – 9

Carbon
Sequestration Rate



Wildlife Value

Planting
considerations



Shagbark Hickory

Carya ovata



Height: 80 ft
Width: 60 ft

USDA Hardiness
Zones: 4 – 8

Carbon
Sequestration Rate



Wildlife Value

Planting
considerations



Hackberry

Celtis occidentalis



Height: 50 ft
Width: 50 ft

USDA Hardiness
Zones: 2 – 9

Carbon
Sequestration Rate



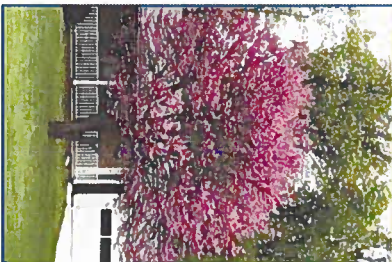
Wildlife Value

Planting
considerations



Eastern Redbud

Cercis canadensis



Height: 25 ft
Width: 30 ft

USDA Hardiness
Zones: 4 – 9

Carbon
Sequestration Rate



Wildlife Value

Planting
considerations



Flowering Dogwood

Cornus florida



Height: 20 ft
Width: 20 ft

USDA Hardiness
Zones: 5 – 9

Carbon
Sequestration Rate



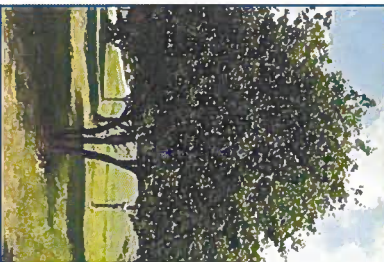
Wildlife Value

Planting
considerations



Washington Hawthorn

Crataegus phaenopyrum



Height: 25 ft
Width: 25 ft

USDA Hardiness
Zones: 4 – 8

Carbon
Sequestration Rate



Wildlife Value

Planting
considerations



Eastern Red Cedar

Juniperus virginiana



Height: 50 ft
Width: 15 ft

USDA Hardiness
Zones: 2 – 9

Carbon
Sequestration Rate



Wildlife Value
Planting considerations



Black Gum

Nyssa sylvatica



Height: 40 ft
Width: 25 ft

USDA Hardiness
Zones: 3 – 9

Carbon
Sequestration Rate



Wildlife Value
Planting considerations



Hop Hornbeam

Ostrya virginiana



Height: 35 ft
Width: 25 ft

USDA Hardiness
Zones: 3 – 9

Carbon
Sequestration Rate



Wildlife Value
Planting considerations



White Spruce

Picea glauca



Height: 50 ft
Width: 15 ft

USDA Hardiness
Zones: 2 – 6

Carbon
Sequestration Rate

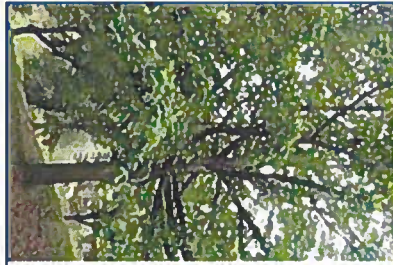


Wildlife Value
Planting considerations



White Oak

Quercus alba



Height: 65 ft
Width: 65 ft

USDA Hardiness
Zones: 3 – 8

Carbon
Sequestration Rate



Wildlife Value
Planting considerations



Swamp White Oak

Quercus bicolor



Height: 55 ft
Width: 55 ft

USDA Hardiness
Zones: 3 – 9

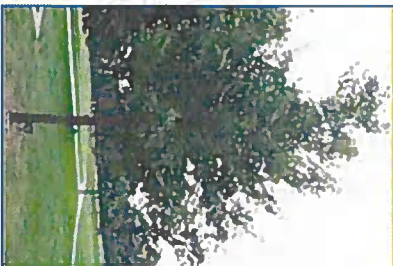
Carbon
Sequestration Rate



Wildlife Value
Planting considerations



Scarlet Oak



Quercus coccinea

Height: 60 ft
Width: 45 ft

USDA Hardiness
Zones: 4 – 9

Carbon
Sequestration Rate

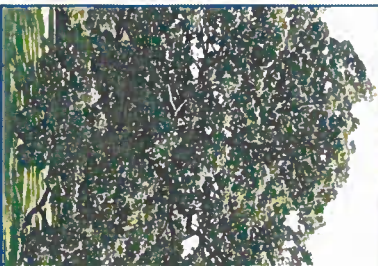


Wildlife Value

Planting
considerations



Bur Oak



Quercus macrocarpa

Height: 70 ft
Width: 70 ft

USDA Hardiness
Zones: 3 – 8

Carbon
Sequestration Rate



Wildlife Value

Planting
considerations



Northern Red Oak



Quercus rubra

Height: 60 ft
Width: 65 ft

USDA Hardiness
Zones: 4 – 8

Carbon
Sequestration Rate



Wildlife Value

Planting
considerations



Basswood



Tilia americana

Height: 65 ft
Width: 65 ft

USDA Hardiness
Zones: 2 – 9

Carbon
Sequestration Rate



Wildlife Value

Planting
considerations



American Elm



Ulmus americana

Height: 70 ft
Width: 55 ft

USDA Hardiness
Zones: 2 – 9

Carbon
Sequestration Rate



Wildlife Value

Planting
considerations

